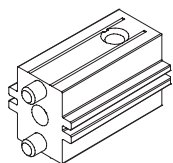


PROFILO 20X20 PROFILE 20X20

RCSA0010

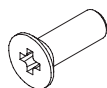
Giunto per profilo 20x20.
Joint for profile 20x20.



Code	unit	min. order (nr)	qty/box (nr)	Kg/box
RCSA0010	NR	100	100	2,40

VTR4X12TSPIC

Vite per fissaggio giunti e traversi/montanti.
Screw for fixing joints and crossbars/uprights.



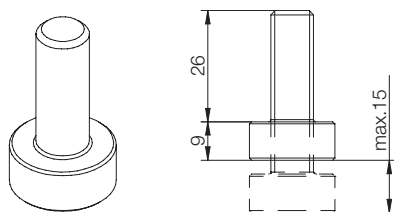
Code	unit	min. order (nr)	qty/box (nr)	Kg/box
VTR4X12TSPICx	NR	500	500	-

Legenda
Key

x = B - zincata nera / black zinc-plated
x = N - nichelata / nickel-plated
x = Z - zincata bianca / white zinc-plated

RCLA0138

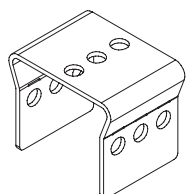
Piedino in alluminio regolabile Ø 20 mm fil. M10.
Aluminium adjustable leg Ø 20 mm, thread M10.



Code	unit	min. order (nr)	qty/box (nr)	Kg/box
RCLA0138	NR	100	100	1,40

RCLF0061

Dima di foratura "do-it-yourself" per strutture 20x20.
"Do-it-yourself" drilling template for structures 20x20.



Code	unit	min. order (nr)	qty/box (nr)	Kg/box
RCLF0061	NR	20	20	0,2