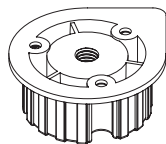


BASI PER PIEDINI Bases for legs

RBA76S

Base tonda con filettatura M10.
Interasse 25 mm.
Round base with M10 thread.
Pitch 25 mm.



Code	unit	min. order (nr)	qty/box (nr)	Kg/box
RBA76S	NR	500	500	14,00

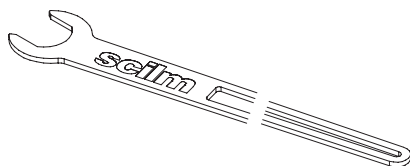


Viti utilizzate:
Screws used:

- VPF
- VPKZ
- PR10MA-C28
- PRAF10/10MA

CTF0063-Z

Chiave di regolazione.
Wrench for adjustment.



Code	unit	min. order (nr)	qty/box (nr)	Kg/box
CTF0063-Z	NR	1	1	-

Utilizzabile solo con piedini che portano il regolo R28C.
Only for use with legs with R28C adjuster.