

**PROFILI GOLA VERTICALI** Vertical gola profiles

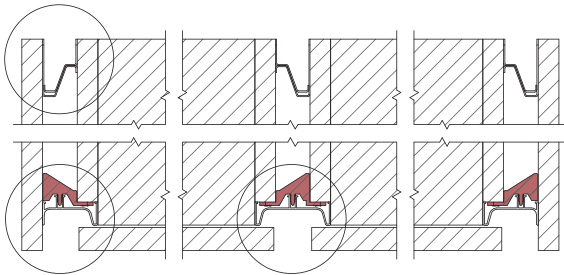
# SPECIFICHE TECNICHE

## TECHNICAL SPECIFICATIONS

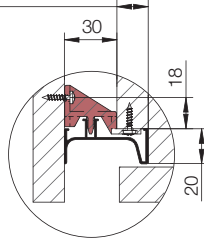
**PROFILI GOLA SNAP ON CON FIANCHI LAVORATI**

SNAP ON GOLA PROFILES WITH DECOR SIDES

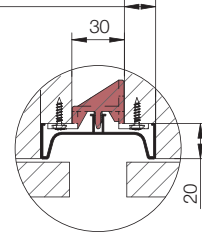
**8023-8024**



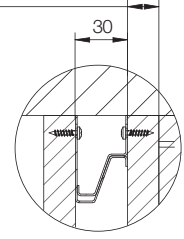
Sp. pannello  
Panel th.



Sp. pannello  
Panel th.

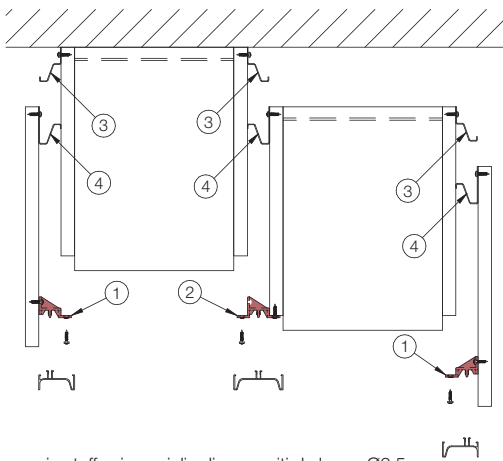


Sp. pannello  
Panel th.



- Il nuovo sistema gola prevede il fissaggio frontale delle staffe in plastica eliminando così le viti interne.
  - Le gole sono inserite a scatto nelle apposite staffe che garantiscono un accoppiamento solidale tra i due componenti. Sono possibili piccoli aggiustamenti in verticale.
  - Il nuovo sistema funziona sempre con cerniera a croce.
  - Interasse di foratura cerniera a croce a 37 mm dal fronte mobile.
  - Cerniera dritta solo nei fianchi privi di gola.
  - Interasse di foratura per cerniera dritta a 20-22 mm dal fronte mobile.
- In the new Gola system, the fixing of the plastic brackets is on the front edge, thus eliminating internal screws.
  - Grip profiles snap onto special brackets, which ensure firm coupling between the two components. Small vertical adjustment can be made.
  - Cross hinges are always used with grip profiles.
  - The gap between holes for the cross hinge is 37 mm from the front of unit.
  - Straight hinges can only be used on side panels without a grip profile.
  - The gap between holes for the straight hinge is 20-22 mm from the front of the unit.

PROFILI GOLA  
GOLA PROFILES



Per fissaggio staffe si consiglia di usare viti da legno Ø3,5  
We recommend using screws for wood, Ø3.5, to fix brackets

<p>① <b>CF.0138SF</b></p>	<p>② <b>CF.0139SF</b></p>
<p>③ <b>CF.0140SF</b></p>	<p>④ <b>CF.0140SF</b></p>

