

PROFILI GOLA VERTICALI Vertical gola profiles

SPECIFICHE TECNICHE

TECHNICAL SPECIFICATIONS

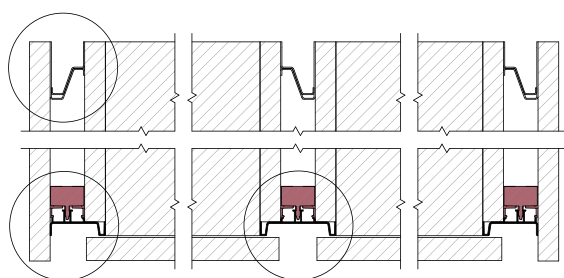
PROFILI GOLA SNAP ON 2 CON FIANCHI LAVORATI
SNAP ON 2 GOLA PROFILES WITH DECOR SIDES

8110-8111-8112-8113 - SP. 18

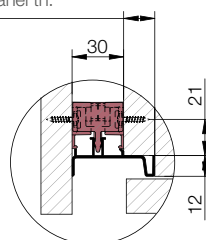
8108-8109-8105-8106 - SP. 16

8116 - SP. 16/ 18

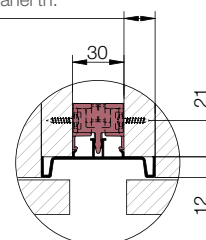
Le gole piatte non hanno bisogno di scavo frontale da 12 mm.
Anche per le gole piatte l'interasse è di 21 mm.
Flat Gola does not need 12 mm frontal cutting.
The wheelbase is 21 mm for Flat Gola, too.



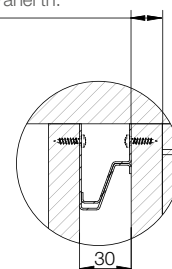
Sp. pannello
Panel th.



Sp. pannello
Panel th.

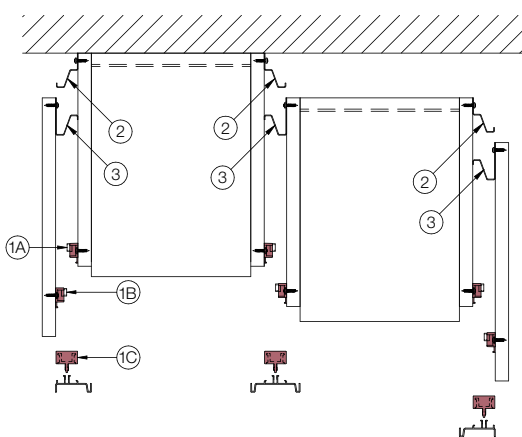


Sp. pannello
Panel th.



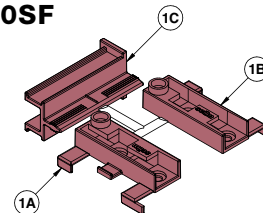
- Il nuovo sistema gole prevede il fissaggio frontale delle staffe in plastica eliminando così le viti.
- In the new Gola system, the fixing of the plastic brackets is on the front edge, thus eliminating internal screws.
- Le gole sono inserite a scatto nelle apposite staffe che garantiscono un accoppiamento solidale tra i due componenti. Sono possibili piccoli aggiustamenti in verticale.

- Grip profiles snap onto special brackets, which ensure firm coupling between the two components. Small vertical adjustment can be made.
- Il nuovo sistema funziona con tutti i tipi di cerniera.
- The new system works with any type of hinge.



Per fissaggio staffe si consiglia di usare viti da legno Ø3,5
We recommend using screws for wood, Ø3.5, to fix brackets

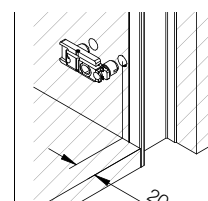
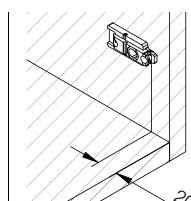
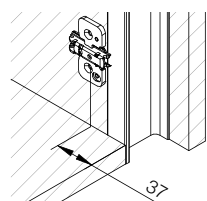
1 CF.0190SF



2 CF.0140SF



3 CF.0140SF

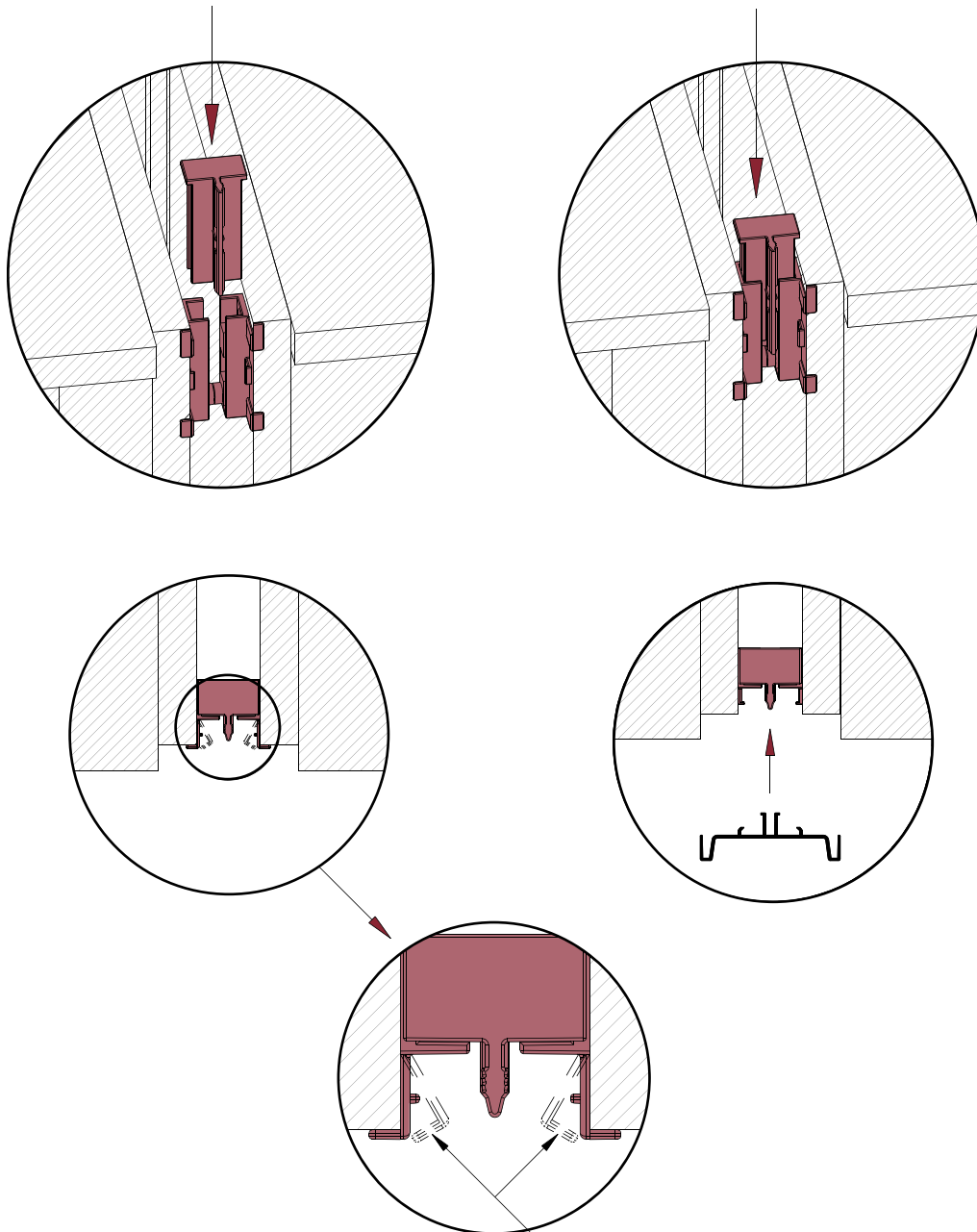


PROFILI GOLA VERTICALI Vertical gola profiles

SPECIFICHE TECNICHE

TECHNICAL SPECIFICATIONS

SISTEMA DI MONTAGGIO SNAP-ON 2
MOUNTING SYSTEMS SNAP-ON 2



rompere le 4 alette di tutte le staffe
piegandole verso l'interno
break the positioning fins of
each bearings by folding them inside