

PROTEZIONE PER LAVELLO IN MATERIALE TERMOPLASTICO

Thermoplastic sink protector

900

Fianchi mobile spessore 18 mm.

Cabinet side panels, 18 mm thick.

Protezione a vaschetta in materiale termoplastico.

Retro rifilabile e profondità max 560 mm.

Thermoplastic tray protector.

Trimable rear and max. depth 560 mm.

Personalizzabile

Facilmente pulibile

Resistente agli urti

Inalterabile nel tempo

Maggiore contenimento di eventuali perdite d' acqua.

Custom-sizing available

Easy to clean

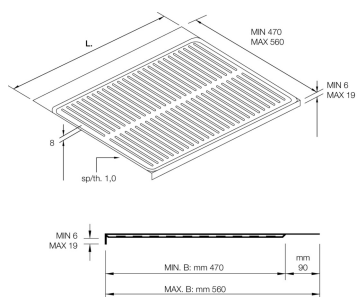
Shock-resistant

Unalterable over time

Greater retention of water leakage.

Colore: grigio.

Color: grey.



L = Fianchi mobile spessore 18 mm

L + 4 = Fianchi mobile spessore 16 mm

PROTEZIONE PER LAVELLO IN MATERIALE TERMOPLASTICO

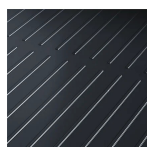
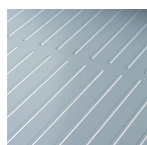
Thermoplastic sink protector

L - 3 = Fianchi mobile spessore 19 mm

W = Cabinet side panels, 18 mm thick

W + 4 = Cabinet side panels, 16 mm thick

W - 3 = Cabinet side panels, 19 mm thick



Code	L (mm)	min. order (No)	qty/box (No)	Kg/box
900xxx	363	100	50	-
	413			
	463			
	563			
	1013			
	963			
	863			
	763			
	663			
	1163			



Fianchi mobile spessore 16 mm :

Cabinet side panels, 16 mm thick:

- L + 4 mm.

- W + 4 mm.

Fianchi mobile spessore 19 mm :

Cabinet side panels, 19 mm thick:

- L - 3 mm.

- W - 3 mm.

Altre misure disponibili su richiesta.

Other dimensions available on request.