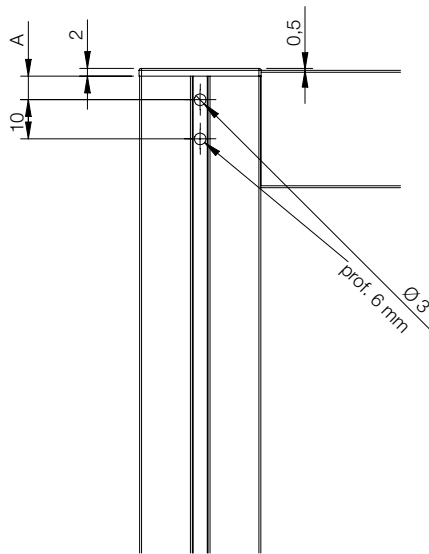


PROJECT2 30X30 PROJECT2 30x30

SPECIFICHE DI FORATURA

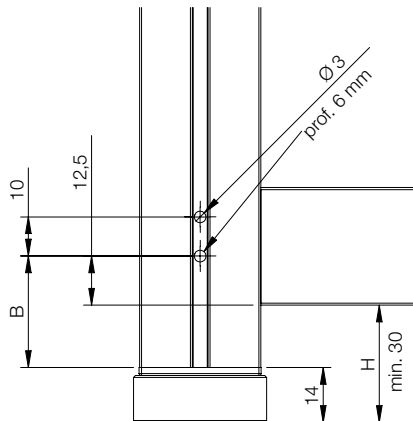
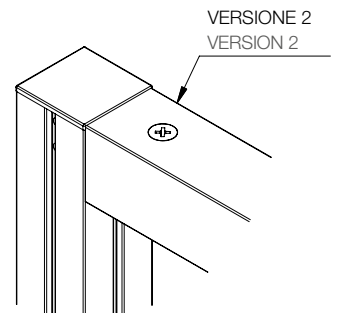
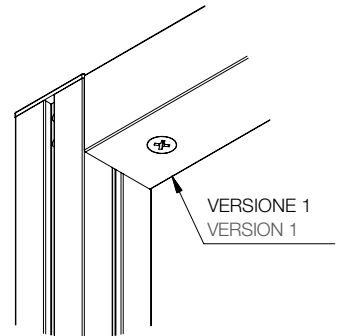
DRILLING SPECIFICATIONS

R6630 / R6633

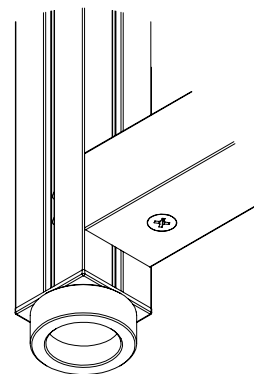


A = 6 mm - versione 1
version 1

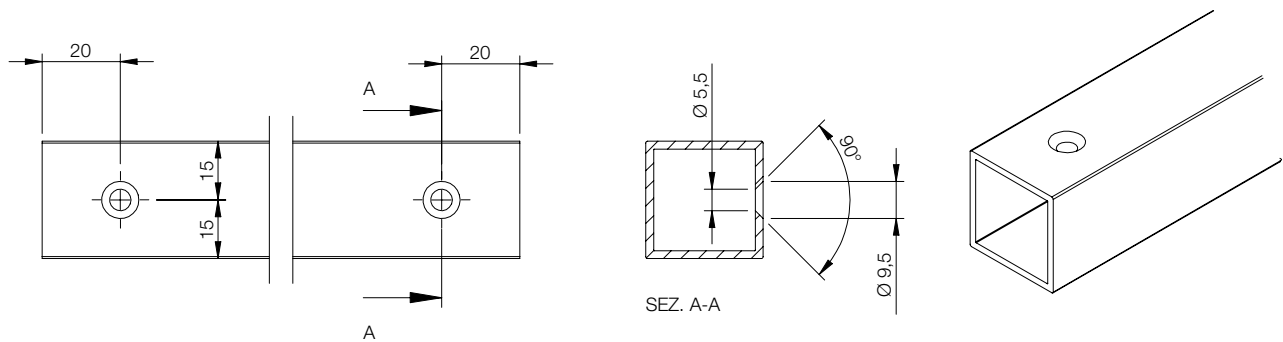
A = 11 mm - versione 2
version 2



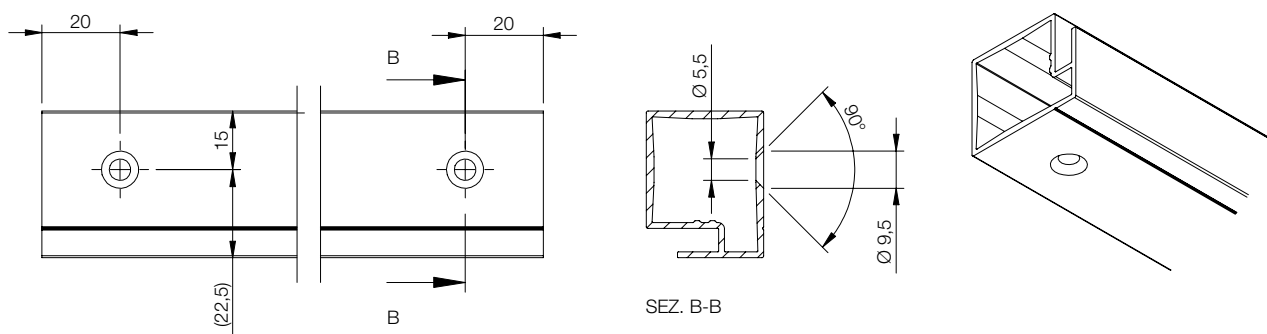
$B = (H+12,5)-14$



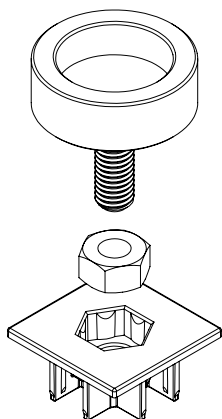
R7590



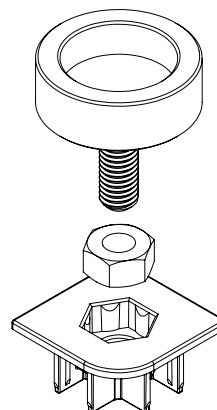
R6632



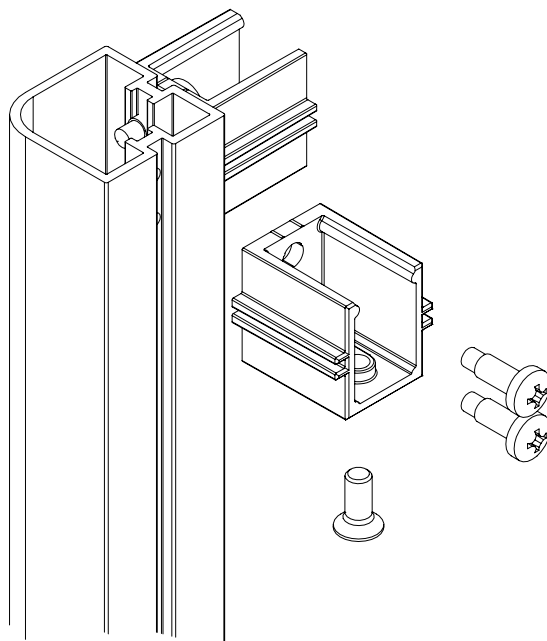
CF.6630-xx/01 - assemblaggio piedino
regolatore per art. R6630
adjustable leg for
art. R6630 assembly



CF.6633-xx/01 - assemblaggio piedino
regolatore per art. R6633
adjustable leg for
art. R6633 assembly



CF.CSA0017/01 - assemblaggio blocchetto
joining block assembly



ATTENZIONE:

La figura rappresenta il montaggio blocchetto per VERSIONE 1 (vite lato inferiore).
Se si vuole la VERSIONE 2 (vite lato superiore) bisogna ruotare il blocchetto di 180°.

ATTENTION:

In the figure you can see the joining block assembly for VERSION 1 (screw in the underside).
If you want the VERSION 2 (screw in the upperside) you have to rotate the joining block 180°.